

MATRIX **DELIVERING** **TO THE WORLD**



LIGHTER • STRONGER • SMARTER

MATRIX COMPOSITES & ENGINEERING LTD

AUSTRALIA +61 8 9412 1200 • USA +1 713 461 0552

matrix@matrixengineered.com • MATRIXENGINEERED.COM

ABN 54 009 435 250 • 09/05/22

MATRIX COMPOSITES & ENGINEERING

THE POWER OF ADVANCED TECHNOLOGIES



LIGHTER • STRONGER • SMARTER

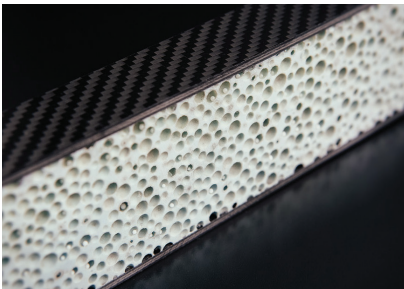
A WORLD OF POSSIBILITIES

Matrix is an industry leader in the development of advanced material solutions and has become a major exporter of composite goods to customers located all over the world and is the exclusive distributor of Humidur® Coatings in Australia, New Zealand and Papua New Guinea.

ADVANCED MATERIALS

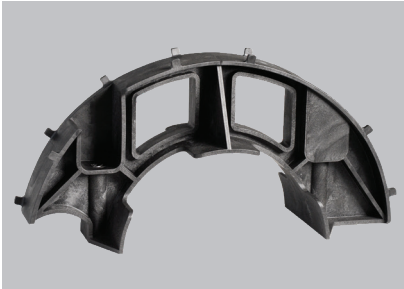
Working alongside our customers, Matrix uses its engineering and materials science expertise at all stages (from ideation to commercialisation) to create real value across a variety of industry sectors including mining and resources, energy and defence.

Made to last and inherently flexible, our advanced material solutions are corrosion resistant and come in all sizes and shapes. Complex geometries are easily accommodated, offering design freedom not possible with traditional materials.



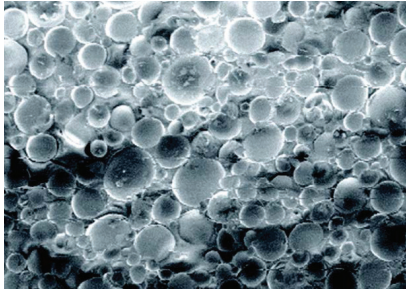
CARBON FIBRE COMPOSITES

Long fibre reinforced laminates in both thermoset and thermoplastic polymers.



IMPACT RESISTANT THERMOPLASTICS

Heavy weight thermoplastics designed and qualified for severe service, with bespoke fibre reinforcement and polymer additives.



SYNTACTIC FOAMS

Light weight fillers – both micro and macroscopic – produce lightweight, stiff and strong materials blended at will to a client's requirements.



HUMIDUR® COATINGS

Solvent free coatings designed to provide long-term corrosion resistance in highly aggressive and biological environments.



ROTOMOULDED POLYMER SHELLS

Home to one of Australia's largest biaxial rotomoulding machines, Matrix manufactures a range of large polymer shells tailored to customer requirements.



KINETICA™

Lightweight energy absorption systems that are chemically inert with closely controlled crush strength and isotropic energy absorption. Kinetica can be cast in-situ to almost limitless volumes.

ADVANCED MANUFACTURING

Our 22,000 m² facility in Henderson, Western Australia, is the largest composite facility in Australia and is certified to ISO 9001:2015. The facility has been designed using the latest advanced manufacturing concepts of LEAN and one piece flow, and incorporates a high degree of automation including moving work cells and production lines, automated chemical processing, robotics and Scada based control systems.

Capable of manufacturing composite solutions of all sizes and shapes, Matrix continually invests in R&D to ensure the most efficient and innovative methods are used to solve customer challenges. To this end, Matrix tailors the properties of advanced materials, through the addition of reinforcements, to create smart solutions that are lighter, stronger and safer.

**HOME TO
AUSTRALIA'S
LARGEST
COMPOSITE
MANUFACTURING
FACILITY**

QUALITY, SAFETY AND ENVIRONMENT

To ensure the properties and performance of our materials, Matrix undertakes vigorous product and verification testing. These tests confirm that all products are fit for purpose and are in line with the requirements of international quality standards, such as ISO-13628-16 and the American Petroleum Institute's API 16F and API 17L, as well as other specifications set by clients and industry bodies. In addition, Matrix has developed its own set of testing procedures that incorporate both industry and client driven standards.

Occupational Health, Safety and Environment (OHSE) are central to Matrix's business and are reflected in the company's culture and core values. Every Matrix employee is an OHSE champion, a mindset that is embedded into the culture and supported by its safety and compliance systems and key company values.



ISO 45001
Occupational
Health and
Safety
SAI GLOBAL



Quality
ISO 9001
SAI GLOBAL



MATRIX HEAD OFFICE AND MANUFACTURING FACILITY AT HENDERSON, WESTERN AUSTRALIA