

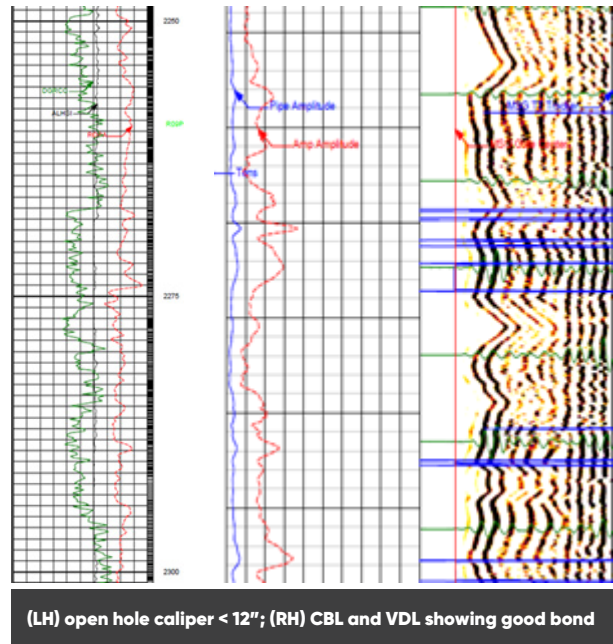


**LIGHTER | STRONGER | SMARTER**

**EVALUATION**

Selection of the Max-R centralizers is typically on the basis of expected friction reduction and hence an evaluation against offsetwells is provided to demonstrate the actual friction reduction achieved. For this particular field two near identical wells were compared. One well had 60% of the 9 5/8" string centralized with Max-R centralizers, while in the other well, the 9 5/8" casing was run without centralizers. Analysis of both drilling data and casing running data showed that the Max-R centralizers reduced the Coefficient of Friction (CoF) by approximately 65%. The CoF related to rotation was evaluated as 0.17. Comparison of the Cement Bond Logs (CBLs) for the two wells showed channelling for the uncentralized casing, but the centralized string showed good cement coverage for the majority of the cemented section. The customer was extremely pleased with the results and plans to deploy Max-R centralizers on future wells in this field, and extend their use to 7" casing.

Where previously centralization was associated with increased drag, this application has demonstrated that centralization with Max-R actually reduces torque and drag. Both objectives of low drag and good centralization can be achieved simultaneously through the use of Max-R centralizers.



**TO FIND OUT MORE,  
VISIT [MATRIXENGINEERED.COM](http://MATRIXENGINEERED.COM) OR  
EMAIL [MATRIX@MATRIXENGINEERED.COM](mailto:MATRIX@MATRIXENGINEERED.COM)**

